

PRICE LIST

of Radia Incandescent Mantle Burners
and Accessories.

Radia Burners No. 3 thread with rising lever, mantle and chimney	\$3.00
Same as above without rising lever	2.50
Burner only with rising lever.....	2.50
“ “ without rising lever..	2.00
Best Magnesia ring Mantle with Support30
Best Magnesia Ring Mantle only..	.25
Threaded collar for reducing burner to fit either No. 2 or No. 1 lamps	.10
Mantle wire, plain.....	.03
12 inch high chimney25
Wick cleaner10

NOTE :—No. 3 threaded collar has $1\frac{3}{4}$ inches in diameter. No. 2 has $1\frac{1}{2}$ inches, and No. 1 has $1\frac{1}{4}$ inches in diameter.

Sample burners will be sent by mail without chimney with one or two mantles for 14 cents in the Province of Quebec. 16 cents for the Provinces of Ontario, N.B., N.S. Man. 20 cents; Sask., Alberta and B.C. 24 cents. When lamp chimneys are required double the above amount.

Twelve in. high lamp chimneys, $2\frac{1}{2}$ or $2\frac{3}{8}$ inches diameter at the bottom, are to be found in all stores where lamp chimneys are for sale.

All burners are highly polished brass with lacquer finish.

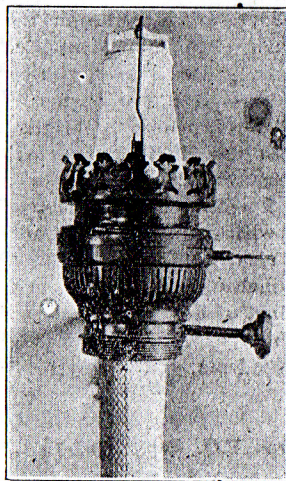
Boxing charged at cost. No charge for boxing when cash accompanies order.

Make remittance by Bank draft. Express or Post Office Money Order.

AUG. GAMACHE,

Sawyerville, Que.

THE "Radia" Incandescent Coal Oil Burner



SIMPLE IN CONSTRUCTION

*Easy to Light and no Part
to get out of Order*

MANUFACTURED BY

AUG. GAMACHE,

SAWYERVILLE, QUE.

Brighter Than Incandescent Gas Light or Electricity

The best reading and sewing light ever produced. Its brilliant light, beauty, simplicity and economy make it the ideal general purpose light for the home.

Can be carried anywhere, same as an ordinary lamp.

Emitting only one-third as much heat as an ordinary central draft lamp and positively no odor, it is also an excellent light for summer evenings and warm climates.

These burners are constructed on the principle of the Bunsen burner, in which a very large proportion of air is mixed and burned with a very small proportion of gas or gas vapor. This same principle is essential in all gas and gasoline stoves, incandescent gas lamps, etc. This mixing of a large proportion of air with a small proportion of oil vapor produces a steady, blue flame, indicating perfect COMBUSTION, which is proven by the entire absence of smoke and smell. This blue flame, indicating also the highest attainable economy in oil consumption, is directed against the mantle, which is thereby caused to become incandescent throwing out that powerful white light, the marvellous brilliancy of which mere words can never adequately describe.

It can be carried around and set anywhere, the same as an ordinary lamp.

It is perfectly safe in every way and does not need to be pumped up like gasoline; no chemicals of any kind or acetylene, it will give pure white light as long as there is oil in the bowl.

The RADIA burners are taking the place of gas and electricity in the homes of people living in the cities because they produce better and more light at less cost and because they are portable and require no cord or tubes.

The RADIA burners can be used on any lamp that has a threaded collar, either No. 2 or No. 3. If the lamp to be fitted has a small collar an increaser collar is used so that the burner will fit.

Each "Radia" Burner is Fitted with a Rising Lever.

Each RADIA burner is fitted with a rising or "LIFT" lever for lighting. It is so constructed that by simply turning the lever it automatically raises the gallery with mantle and chimney allowing the wick to be lighted, then by turning the lever back the gallery is lowered into its normal place.

Improved Mantles of Special Durability.

The improvement of gas light by the use of mantles is very common now wherever gas is available, and therefore the writer does not feel that it is necessary to set up any argument in regard to Mantles except to say that the Mantles used on RADIA Burners are far superior to those used on gas, and are furnished at less cost than gas mantles. They are quite resistible to shocks and concussion, but of course will break if handled roughly. Besides, the RADIA Burners do not puff or explode like gas does in lighting and therefore are not subjected to the conditions that so often destroy mantles on gas. I can therefore say that Mantles used on RADIA Burners will outlast mantles used on gas several times over.

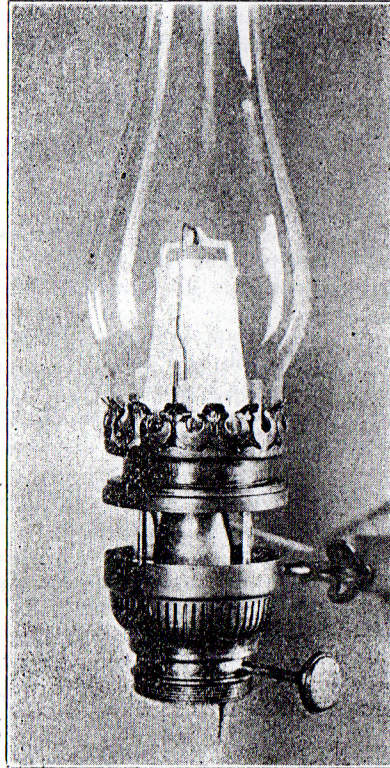
The chimneys are regular No. 2, 12 inches high, such as used on Rochester Belgium, Acme and several other styles of lamps. They may be procured at any store. This allows the sending of this burner with mantle by mail to any part of Canada for 16 cents postpaid.

Economy Means More than Saving Oil.

It also means the preservation of health and eyesight and happiness. The light from a RADIA Burner is the easiest on the eyes of all artificial lights known. You can read the finest print or do the finest sewing by means of this most beautiful light and be free from eye strain, headaches and brainfag so common with poor illumination. The light is so wonderfully diffused that it is nearly as bright anywhere in the room as it is near the lamp—there is abundant light for all. EXPLOSION IS ABSOLUTELY IMPOSSIBLE.

Less Trouble Than Other Lamps.

A Lamp fitted with a RADIA burner requires less attention than any ordinary lamp, because the oil is vaporized before it reaches the mantle and therefore the chimney stays clean, while the wick never needs trimming, simply wipe occasionally with a soft cloth, or with your finger.



"RADIA BURNER," showing position for lighting.

The Marvellous Brilliancy of the Mantle, Combined with a Wonderful Saving in the Use of the World's Cheapest Illuminant.

If there is any one thing which is generally neglected in town and rural homes, it is the matter of having good light during the evening hours. As most people must work in the daytime, it is of the highest importance that all cheer and comfort possible be brought to the home evenings AND NOTHING WILL DO THIS SO EFFECTUALLY AS GOOD ILLUMINATION. The ordinary oil lamp handed down from our grandfathers' time, with its foul odor, smoked chimney and efficiency for converting oil into heat instead of light, is rapidly becoming a thing of the past. Its dim, red, flickering flame is frequently the cause of headaches and permanent injury so the eyes. Its first cost may be low, but thereafter all economy ceases, as is shown in the following table, which is based on actual photometer tests:—

Average Cost of 100 Candle Power of Various Lights Six Hours per Night for One Month.

	COST
Sixteen Candle Power Electric Lights \$4.32
Acetylene Gas Lamps 3.96
Ordinary Coal Oil Lamps, round wicks	... 3.74
Detonated Alcohol Lamps, using Mantles	... 3.60
Ordinary Coal Oil Lamps, flat wicks	... 3.57
Gravity Gasoline Lamps, using mantles	... 1.69
Artificial Gas, "city gas" using mantles 1.26
Natural Gas, using mantles81
RADIA COAL OIL MANTLE LAMP51

"Coal oil at 18 cts. per gallon."
The best of the ordinary round wick Lamps give from 27 to 30 candlepower light and consume a quart of oil in a little over five hours. A RADIA LAMP gives nearly three times as much light AND MAKES A QUART OF OIL LAST ABOUT 16 HOURS. Agents are requested to invite prospective purchasers to make this test for themselves before buying RADIA BURNERS.

AUG. GAMACHE,
Importer and Manufacturer.
Sawyerille, P.Q.